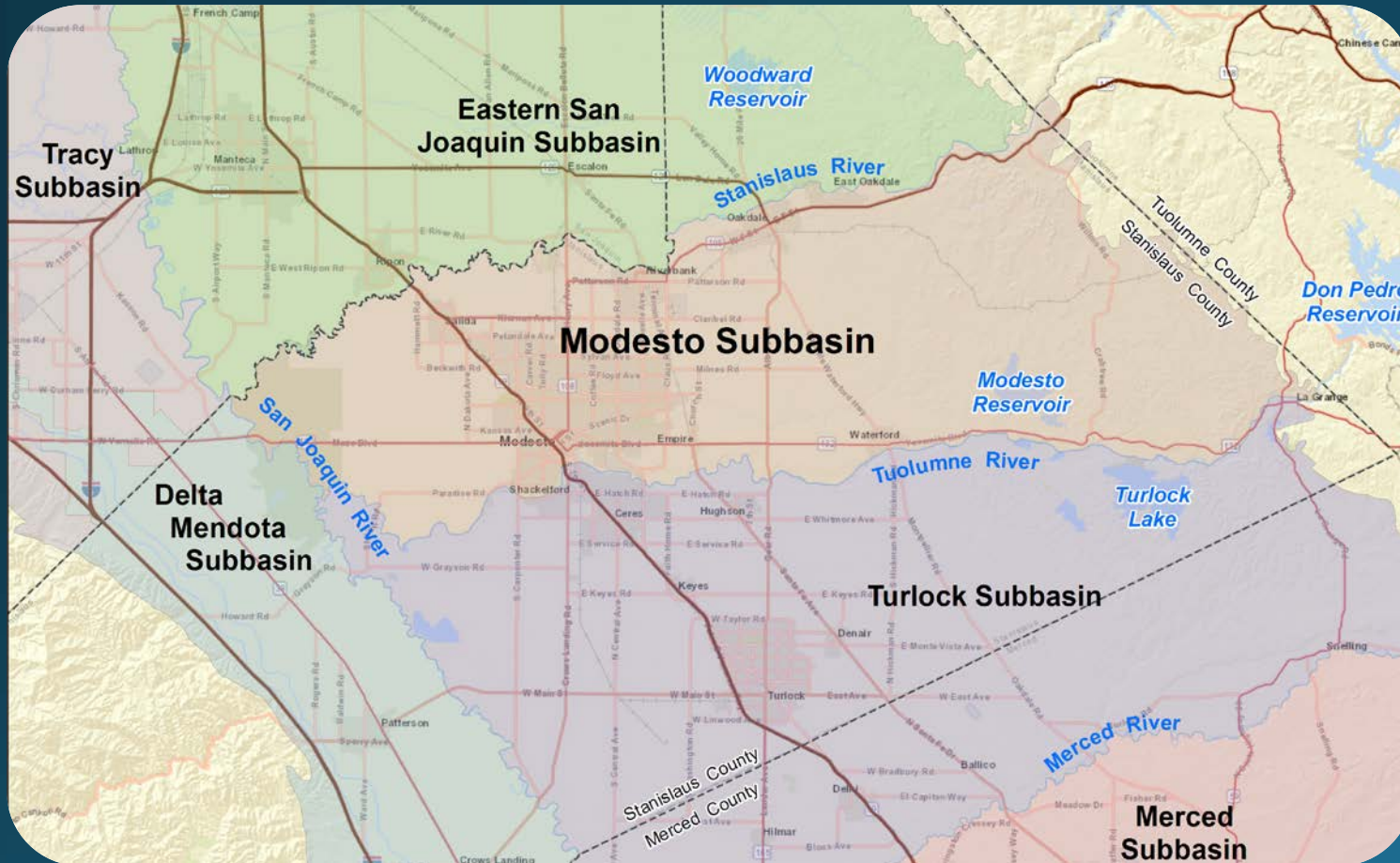




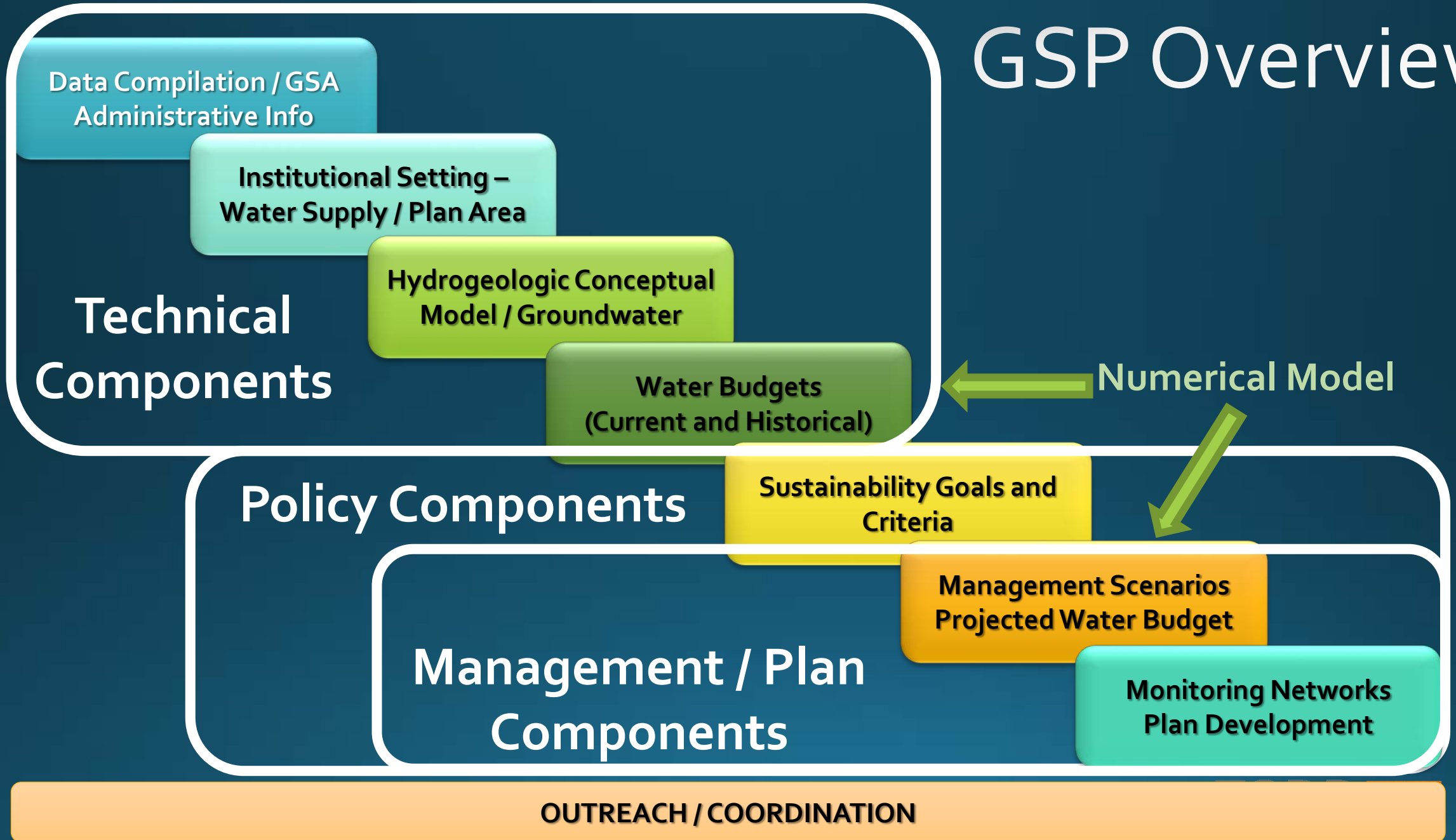
STRGBA Groundwater Sustainability Agency
Tuolumne Groundwater Sustainability Agency



Modesto Subbasin Groundwater Sustainability Plan (GSP) Update

January 9, 2019

GSP Overview



Modesto Subbasin GSP Timeline

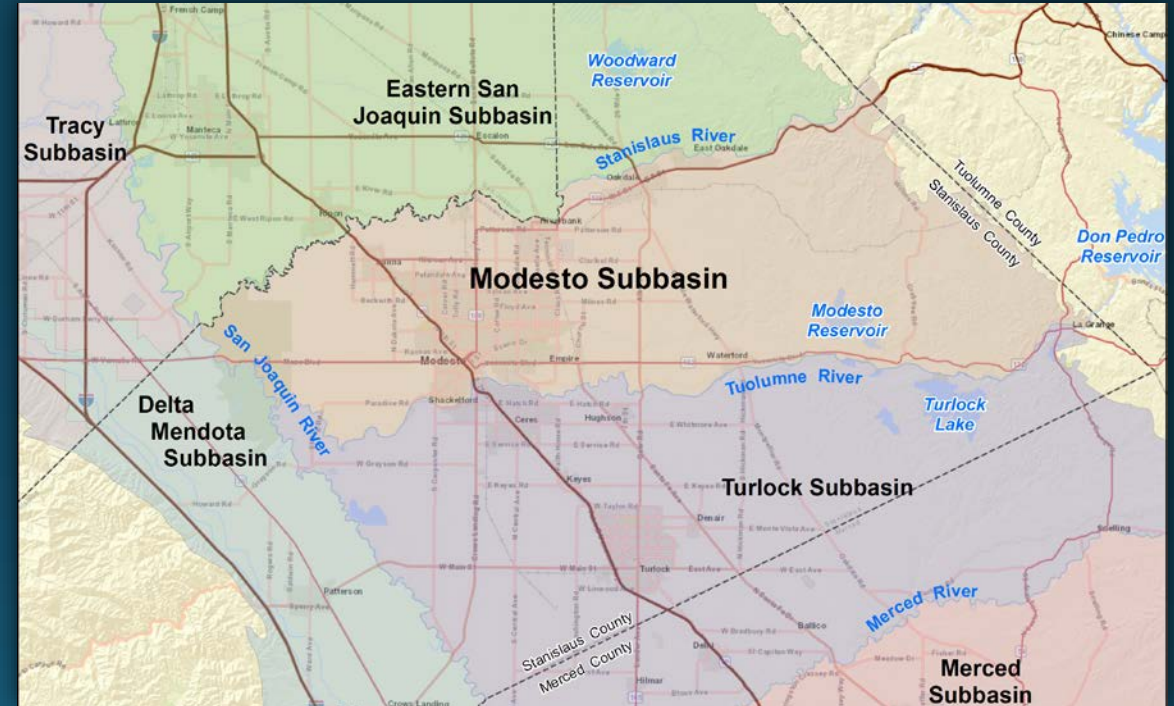
2018				2019				2020				2021				2022												
Sep	Oct	Nov	Dec	Jan	Feb	Mar	Apr	May	Jun	Jul	Aug	Sep	Oct	Nov	Dec	Jan	Feb	Mar	Apr	May	Jun	Jul	Aug	Sep	Oct	Nov	Dec	Jan
Data Compilation																Final DMS to DWR												
				Local Numerical Model																								
				Plan Area/ Admin																								
				Hydrogeologic Conceptual Model / Groundwater Conditions																								
								Water Budgets																				
								Sustainable Management Criteria																				
												Management/Projects for Sustainability																
												Monitoring Networks																
												Plan Implementation/ GSP Document																
																Review and Adoption												
Project Administration / Outreach / Coordination																												

Outreach and Coordination

Technical Workshops at
GSA Meetings

Inter-Basin Coordination
Technical and Outreach

Outreach and Engagement
Stakeholders / Public



Eastern San Joaquin Subbasin
Delta-Mendota Subbasin
Turlock Subbasin

Technical Workshops

Subbasin Coordination and Workshop Schedule

Inter-Basin Coordination

Public Outreach

Schedule	Key GSP Working Tasks	Drafts - GSP Sections	STRGBA/Tuolumne GSAs Workshops (Task 9.2.1 from GSP Workplan)	GSP Status Meetings (Task 10.2)	Tuolumne/STRGBA GSAs Meetings	Subbasin Coordination Meetings (Task 9.2.2 from GSP Workplan)	Public Workshops (Task 9.1 from GSP Workplan)	
2018	September	Data Compilation, Basin Setting		Kickoff Meeting 9-12-2018	9/12/2018			
	October				10/10/2018			
	November			Manager's Meeting 11-16-2018	No Meeting			
	December					12/12/2018		
2019	January	Plan Area, Hydrogeologic Conceptual Model (HCM), Groundwater Conditions, Local Numerical Model		Meetings and Outreach 01-09-2019	1/9/2019			
	February				2/13/2019	Delta Mendota No. 1		
	March				3/13/2019	Eastern SJ No. 1	Community Workshop No. 1: GSP Process and Meeting Schedules	
	April	HCM, Groundwater Conditions, Local Numerical Model	Administrative Information, Plan Area	Workshop No. 1: Plan Area, Hydrogeologic Conceptual Model		4/10/2019		
	May				5/8/2019	Turlock No. 1		
	June				6/12/2019			
	July	HCM, Groundwater Conditions, Local Numerical Model, Water Budgets				7/10/2019	Delta Mendota No. 2 Eastern SJ No. 2	Community Workshop No. 2: Plan Area and HCM
	August			Workshop No. 2: Hydrogeologic Conceptual Model, Groundwater Conditions		8/14/2019		
	September					9/11/2019		
	October		HCM/ Groundwater Conditions			10/9/2019		
	November			Workshop No. 3: Numerical Model and Water Budgets		11/13/2019	Turlock No. 2	
	December						12/11/2019	

DRAFT Meeting Schedule 2018 - 2019

DRAFT Meeting Schedule 2020 -2022

Schedule	Key GSP Working Tasks	Drafts - GSP Sections	STRGBA/Tuolumne GSAs Workshops (Task 9.2.1 from GSP Workplan)	GSP Status Meetings (Task 10.2)	Tuolumne/STRGBA GSAs Meetings	Subbasin Coordination Meetings (Task 9.2.2 from GSP Workplan)	Public Workshops (Task 9.1 from GSP Workplan)	
2020	January	Sustainable Management Criteria / Identify Management Actions and Projects	<i>Numerical Model and Water Budgets</i>			1/8/2020	Community Workshop No. 3: HCM, Groundwater, and Water Budgets	
	February		Workshop No. 4: Sustainable Management Criteria and Undesirable Results - Concepts			2/12/2020		
	March					3/11/2020		
	April					4/8/2020		
	May		Workshop No. 5: Sustainable Management Criteria - Results; Actions and Project Identification			5/13/2020	Turlock No. 3	
	June		<i>Sustainable Management Criteria</i>			6/10/2020		Community Workshop No. 4: Sustainable Management Criteria
	July	Screen/Analyze Management Actions and Projects to achieve Sustainability Criteria		Workshop No. 6: Climate Change and Projected Water Budgets, Projects Analysis		7/8/2020		
	August					8/12/2020		
	September		Workshop No. 7: Management Actions and Projects			9/9/2020		
	October					10/14/2020		Community Workshop No. 5: Projects and Management Actions for Sustainability
	November					11/11/2020		
	December		<i>Management Actions and Projects</i>	Workshop No. 8: Projects Analysis, GSP Development			12/9/2020	
2021	January	GPS Implementation Plan, Monitoring Networks, GSP Document Preparation				1/13/2021	Community Workshop No. 6: Projects Analysis and GSP Development	
	February		Workshop No. 9: GSP Development, Monitoring Programs, GSP Implementation			2/10/2021	Turlock No. 4	
	March		<i>Monitoring Networks</i>			3/10/2021		
	April					4/14/2021	Community Workshop No. 7: Monitoring and GSP Development	
	May					5/12/2021		
	June		Workshop No. 10: GSP Document Review			6/9/2021	Turlock No. 5	
	July	<i>Public Review Draft GSP</i>				7/14/2021	Community Workshop No. 8: Public Review GSP	
	August				8/11/2021			
	September	Final GSP, Adoption, Prepare Data Sets	Workshop No. 11: GSP Document Review			9/8/2021		
	October					10/13/2021		
	November					11/10/2021	Community Workshop No. 9: Public Comments	
	December		Workshop No. 12: Public comments, Final GSP Presentation			12/8/2021		
2022	January	SUBMIT GSP	<i>Final GSP, DMS</i>			1/27/2022		



Strategy for Modesto Subbasin Stakeholder Outreach

- Todd Groundwater to retain Craig Moyle at Stantech
 - Stantech currently under contract with DWR for SGMA outreach
 - Working with numerous agencies in the southern San Joaquin Valley
 - Located in Sacramento; works with FSS and other DWR coordinators daily
 - Previous experience in the Modesto Subbasin
- Supplement outreach budget through the DWR FSS grant program, if funds are available
 - Focus on multiple subbasin coordination for FSS grant (DWR priority)
- Use outreach expertise from Modesto Irrigation District
 - Know the people and the basin; currently engaged in similar activities
 - Outreach materials, scheduling, logistics

GSP Next Steps

- Initiate Outreach Program
- Continue Data Compilation and Analysis
- Technical meeting on local groundwater model
- Begin Inter-Basin Coordination – Focus on Critically Over-drafted basins first
- Plan for April Workshop No. 1 – Plan Area